



POS Pin-Pad PAX Q30 con kit di fissaggio e supporto POS universale

PROCESSORE (PROCESSOR)	Cortex A9
MEMORIA (MEMORY)	1GB (512 MB Flash + 512 MB DDR) Micro SD (TF card) sopra I 32 GB
SCHERMO (DISPLAY)	LCD touch screen 4" (800x480) Pixel Color Display schermo touch screen capacitivo (capacitive touch screen), Electronic Signature Capture
TASTIERA (KEY PAD)	10 tasti numerici (10 numeric keys) e 3 tasti funzionali (3 function keys) retroilluminazione (back lighting) tasto di reset (reset button)
SISTEMA OPERATIVO (OPERATING SYSTEM)	Prolin based on Linux
INDICATORI (INDICATORS)	Contactless indicator banda magnetica (magstripe indicator) chip slot indicator
COMUNICAZIONI (COMMUNICATIONS)	RS232 Ethernet ad alta velocità (high speed ethernet) USB Power - USB Optional WiFi + Bluetooth
LETTURA CARTE (CARD READERS)	Magnetic Card Reader Smart Card Reader Contactless Card Reader
SAM/SIM	3 SAM Card Slots 2 SIM Card Slot Maximum
AUDIO	Speaker 90db Audio Jack (opzionale)
CAMERA	0.3 Megapixel Fixed Focal Camera 1D / 2D Barcode and QR Code Reader

RESISTENZA AMBIENTALE
(ENVIRONMENTAL)

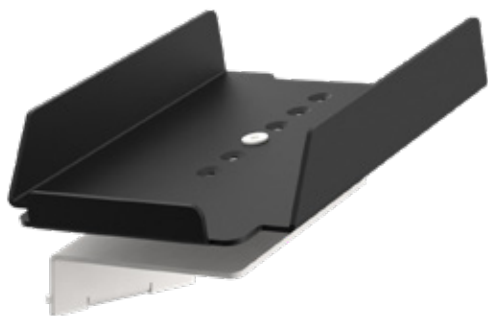
0°C - 50°C Temperatura in funzionamento
(operating temperature) | -20°C - 70°C
Temperatura di conservazione (storage
temperature) | umidità relativa (relative
humidity): 5% - 95%, no condensa
(non-condensing)

VOLTAGGIO (VOLTAGE)

Input: 100 - 240 V AC, 50 Hz/60 Hz | Output:
5.0 V DC, 1.0A

CERTIFICAZIONI (CERTIFICATIONS)

PCI PTS 5.x, SRED | EMVL1 & L2 | EMV CL L1 |
MaterCard Contactless
MasterCard TQM | Amex Expresspay | Discover
D-PADS | Visa payWave JCB J/Speedy |
Interact Flash



Supporto POS universale